

# TOILETS / URINALS: SETS, VALVES, REPAIR & SCHEMATICS

- TOILET SETS WITH SCHEMATICS
  - URINALS WITH SCHEMATICS
- FLUSH VALVES WITH SCHEMATICS
  - TOILET SEATS
- TOILET INSTALLATION & REPAIR PARTS
  - CLOSET BOLTS
  - TOILET TANK LEVERS
- CLOSET FLANGES (SEE “CLOSET DRAINS” CHAPTER I)

**American Standard - Cadet 3**

*American Standard*

- Chrome Trip Lever
- A Low-Consumption Toilet (6.0 Lpf/ 1.6 gpf)

**CADET® 3**  
Flushing System

- \*238-467 † ‡ \*\* (Right Height™)
- \*238-567 † ‡ \*\* (Elongated)
- \*238-667 † ‡ \*\* (Round Front)

\*When ordering a **Toilet Set** please specify color, tank configuration and trim finish.



**TOILET COMPONENTS**

Part #	description
238467RHE_ _ _	† 16-1/2"H elongated bowl w/caps
238567ELB_ _ _	† elongated bowl w/caps
238667RDB_ _ _	† round front bowl w/caps
238400TK0_ _ _	† tank-10" R.I. (w/coupling comp. & trim)
2385_ _TK2_ _ _	† ‡ tank-12" R.I.
238600TK4_ _ _	† tank-14" R.I. (w/coupling comp. & trim)
238420TC0_ _ _	† tank cover only-10" R.I.
238520TC2_ _ _	† tank cover only-12" R.I.
238620TC4_ _ _	† tank cover only-14" R.I.
2383999TLL_ _	** trip lever-L.H.

**TOILET PARTS**

Part #	description
2384530BCK_ _	† bolt cap kit (2)
23874600224VA	Fluidmaster 400A valve
2388550011FVA	flush valve assembly-3" (TK0)
2388570033FVA	flush valve assembly-3" (TK2)
2388590055FVA	flush valve assembly-3" (TK4)
2387320210FPA	flapper assembly-3"
2384990066TCK	tank coupling kit (inc. install tool)
2383200000RT5	refill tube-5"
2383200000RT9	refill tube-9"

**† PLEASE SPECIFY COLOR CODE WHEN ORDERING:**  
 BON - Bone  
 BLK - Black  
 LIN - Linen  
 SVR - Silver  
 WHT - White

**‡ PLEASE SPECIFY TANK CONFIGURATION CODE WHEN ORDERING, 12" R.I. ONLY:**  
 00 - Tank Complete w/coupling comp. & trim (10", 12" & 14" R.I.)  
 01 - Tank Complete w/Aquaguard Liner  
 03 - Tank Complete w/cover locking device  
 05 - Tank Complete w/Aquaguard & lock  
 07 - Tank Complete w/R.H. trip lever\*\*  
 09 - Tank Complete w/R.H. trip lever\*\* & lock

**\*\* PLEASE SPECIFY TRIM FINISH CODE WHEN ORDERING:**  
 CP - Polished Chrome  
 BB - Blackened Bronze  
 PB - Polished Brass  
 SN - Satin Nickel  
 WT - White

**American Standard - Allbrook Urinal**

*American Standard*

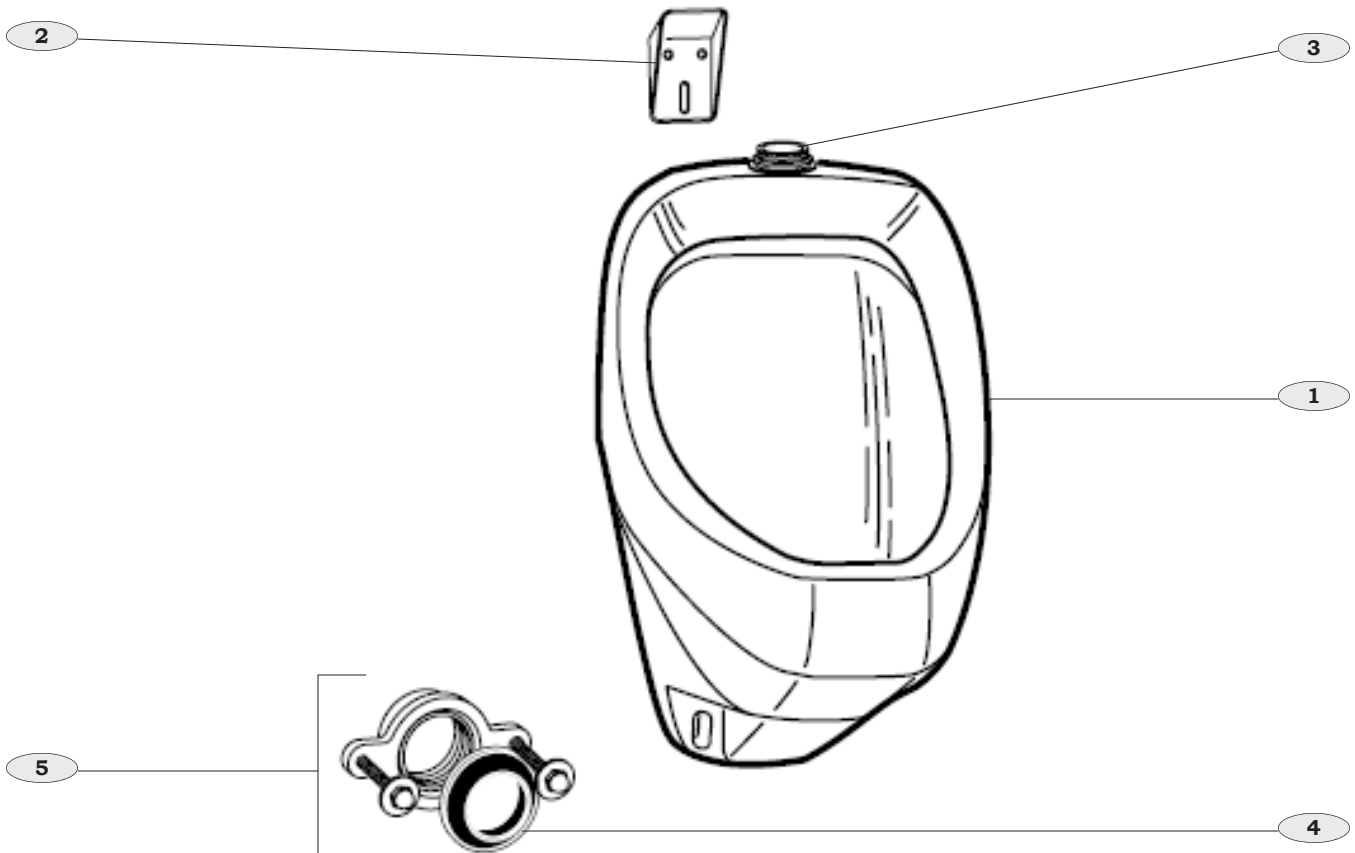
ALLBROOK - AS6541 / AS6540

- Low-Consumption Urinal (3.8 Lpf/ 1.0 gpf)
- Siphon Jet Flush Action
- 3/4" Top Inlet Spud - Outlet Connection Threaded 2" Inside
- Wall Hanger
- Fixture Only



**\*\* PLEASE SPECIFY COLOR CODE WHEN ORDERING:**

- BON - Bone
- LIN - Linen
- SVR - Silver
- WHT - White



**URINAL COMPONENTS**

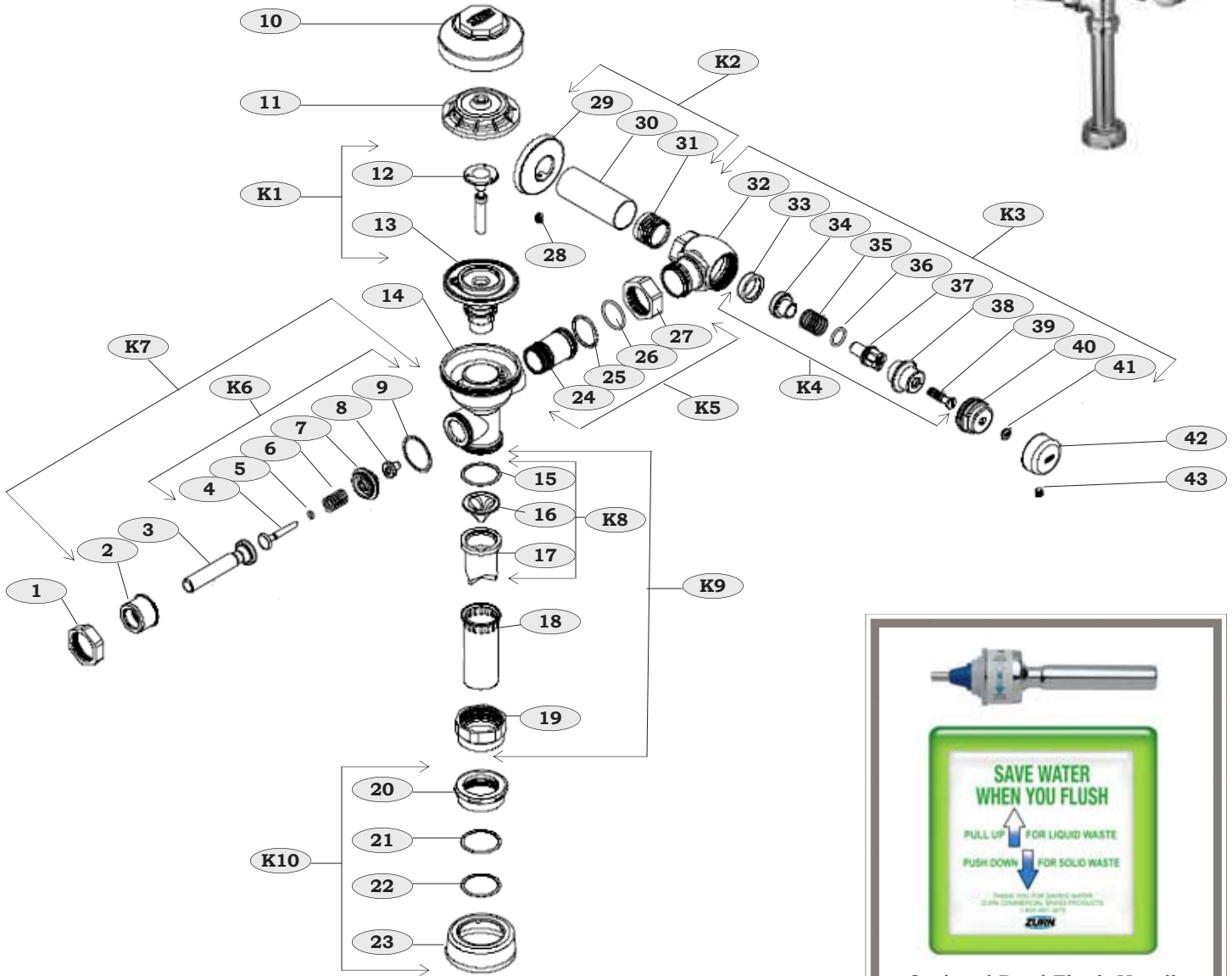
	<b>Part #</b>	<b>description</b>
<b>1.</b>	AS6541**	urinal fixture - inlet spud 1" x 3/4"
<b>1a.</b>	AS6540**	urinal fixture - inlet spud 1-1/4" x 1-1/4"
<b>2.</b>	AS654400WB	wall hanger
<b>3.</b>	AS654700ISD	inlet spud (1"x 3/4")
<b>3b.</b>	AS654799ISD	inlet spud (1-1/4" x 1-1/4")
<b>4.</b>	AS654750CSW	conical sponge washer
<b>5.</b>	AS654755OCF	2" female outlet connection (w/bolts, washers & conical sponge washer)

**AquaVantage AV Flush Valve**

ZAV6000 Series



- With Chemical & Clog-Resistant, Triple Filter Diaphragm
- Exposed Flush Valve With Top Spud Connection
- ADA Compliant
- Non-Hold Open/No Leak Handle
- **See Next Page For Parts List & Kits**





**SAVE WATER WHEN YOU FLUSH**

PULL UP ↑ FOR LIQUID WASTE

PUSH DOWN ↓ FOR SOLID WASTE

PLEASE DO NOT POUR SALES WATER - CLEAN CHEMICALS, BRUSH PRODUCTS (100-100-017)

**ZURN**

- Optional Dual Flush Handle For Water Closets & Urinals
- \*down actuation for full flush
- \*up actuation for 30% flush
- Easily Retro-fits To Existing Valves
- Comes With Instructional Wall Sticker

**Part # Z399DFH**

**AquaVantage AV Flush Valve (cont.)- Parts List**



**COMPLETE VALVE ASSEMBLIES:**

Part #	description
ZAV6000LCC**	1.6 gal. low consume flush-water closet-top
ZAV6000WSC**	3.5 gal. water saving flush-water closet-top
ZAV6000FFC**	4.5 gal. full flush-water closet-top
ZAV6000DFC	dual flush handle-water closet-top
ZAV6010LCC**	1.6 gal. low consume flush-water closet-back
ZAV6010WSC**	3.5 gal. water saving flush-water closet-back
ZAV6010FFC**	4.5 gal. full flush-water closet-back
ZAV6010DFC	dual flush handle-water closet-back
ZAV600LCU**	1.0 gal. low consumption flush-urinal-top
ZAV600WSU**	1.5 gal. water saving flush-urinal-top
ZAV600FFU**	3.0 gal. full flush-urinal-top
ZAV600DFU	dual flush handle-urinal-top

**\*\*HANDLE OPTIONS:**

Water Closets/Urinals:  
 SH - Side (Standard)  
 HF - Handle Front  
 B1 - Push Button, 1"  
 B3 - Push Button, 3"

**AVAILABLE SIZES:**

Water Closets:  
 11.5" R.I.  
 16" R.I.  
 24" R.I.  
 27" R.I.  
Urinals:  
 3/4"  
 1-1/4"

**PARTS LIST:**

	Part #	description
1.	Z1000HNN	handle nut
2.	Z1100HI	handle sleeve & insert
3.	Z1206LS	low force/ADA compliant handle
4.	Z1212TR	actuator rod
5.	Z1515ORG	handle o-ring
6.	Z2000HN	handle spring
7.	Z2347HR	handle retainer
8.	Z23721HL	handle seal
9.	Z23812GK	gasket
10.	Z3488VC	valve body cover
11.	Z3577CV	plastic cover
12.	Z237UVV	trip mechanism/relief valve-urinal
	Z337CVV	trip mechanism/relief valve-closet
13.	Z4922DRK	diaphragm repair kit
14.	Z4765VV	valve body
15.	Z4211VBW	vacuum breaker friction washer
16.	Z5268VBI	vacuum breaker insert
17.	Z5547VBB	vacuum breaker duck bill
18.	Z5899VBT	vacuum breaker tube
19.	Z5321VBN	vacuum breaker tube nut
20.	Z6521SNT	spud nut
21.	Z6868SPW	spud friction washer
22.	Z6547SPV	spud sleeve
23.	Z6212SPE	spud escutcheon
24.	Z7733TP	tailpiece
25.	Z7245SPR	snap ring
26.	Z7868TORG	tailpiece o-ring
27.	Z7990SLN	locking nut
28.	Z7070FTS	setscrew for cast wall flange
29.	Z7423CF	cast wall escutcheon
30.	Z8292CT	supply cover tube
31.	Z8100SSA	sweat solder adapter
32.	Z8747SO	stop body
33.	ZS8668PO	piston seal
34.	Z8213PO	piston
35.	Z8766SOS	stop spring
36.	Z8999ORG	guide o-ring
37.	Z9000GU	piston guide
38.	Z9090GU	guide holder
39.	Z9116SJ	adjusting screw
40.	Z9282SPC	stop cap
41.	Z9632SC	snap cap screw cover
42.	Z9747CV	vandal resistant control stop cover
43.	Z9922SC	set screw for control stop cover

**AVAILABLE KITS:**

	Part #	description
K1.	ZAV16DRK	1.6 gal. low consumption closet kit
	ZAV35DRK	3.5 gal. water saving closet kit
	ZAV45DRK	4.5 gal. full flush closet kit
	ZAV10DRK	1.0 gal. low consumption urinal kit
	ZAV15DRK	1.5 gal. water saving urinal kit
	ZAV30DRK	3.0 gal. full flush urinal kit
K2.	Z1651SS	sweat solder connection - 1"
	Z3653SS	sweat solder connection - 3/4"
K3.	Z566TPK	tailpiece repair kit
K4.	Z987STK	VP control stop repair kit - 1" & 3/4"
K5.	ZA62TPK	adjustable tailpiece for stand. flush
K6.	Z100HKS	handle repair kit (side)
	Z200HKF	handle repair kit (front)
K7.	ZS111HAA	handle assembly (side)
	ZF222HAA	handle assembly (front)
K8.	Z7554VB	vacuum breaker repair kit
K9.	Z8866FTA	flush tube assembly (specify size & length)
K10.	Z9292SCA	spud coupling assembly (specify size)

**Rebuild Kits Include Items 4-9, 12, 13, 15-17, 26:**

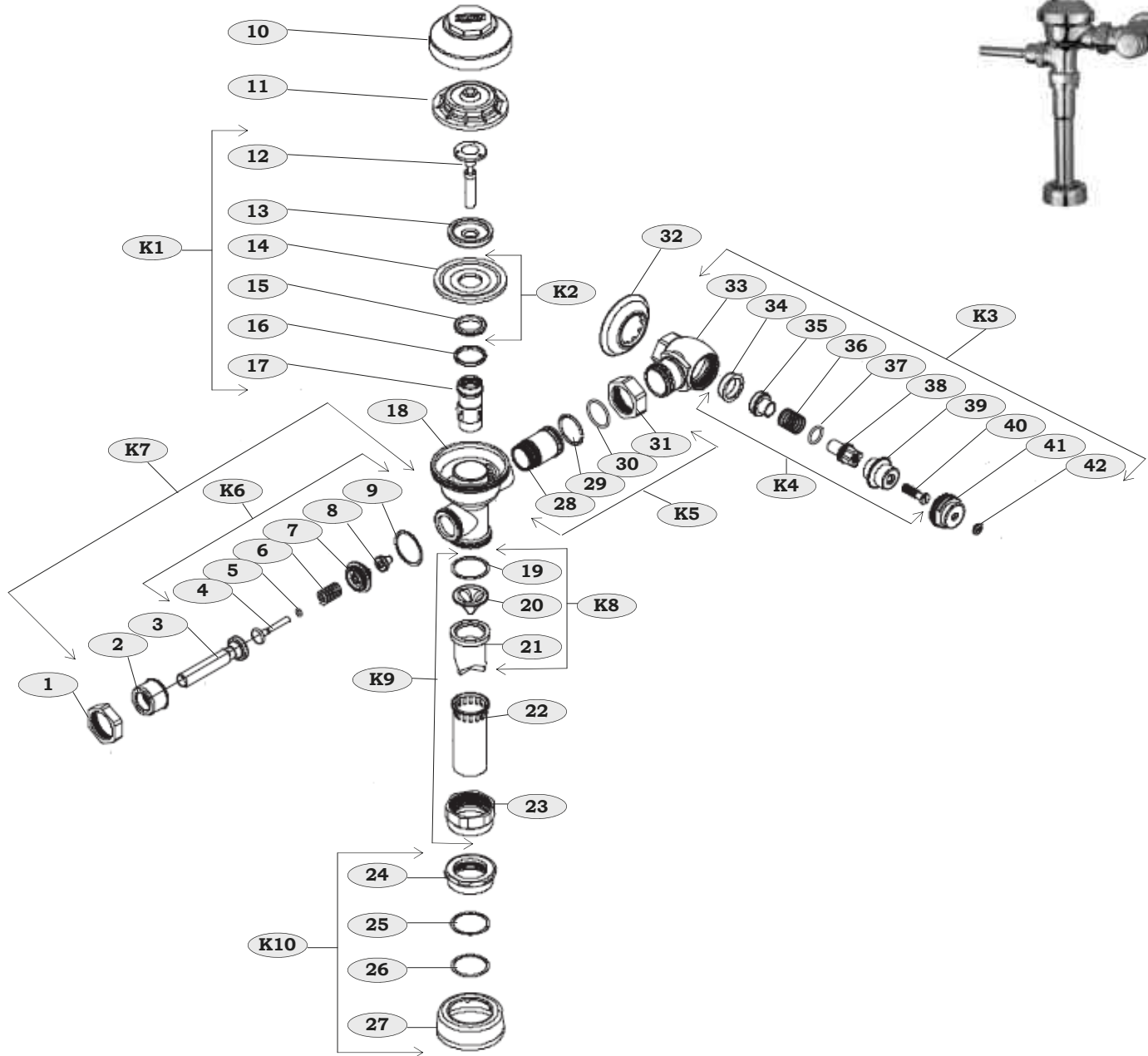
4.5g	#ZAV45CRK	3.0g	#ZAV30URK
3.5g	#ZAV35CRK	1.5g	#ZAV15URK
1.6g	#ZAV16CRK	1.0g	#ZAV10URK

**Aquaflush Flush Valve**

ZAF6000 Series



- With Chemical & Clog-Resistant Dual Seal Diaphragm
- Exposed Flush Valve With Top Spud Connection
- ADA Compliant
- Non-Hold Open/No Leak Handle
- **See Next Page For Parts List & Kits**





**Aquaflush Flush Valve (cont.) - Parts List**



**COMPLETE VALVE ASSEMBLIES:**

Part #	description
ZAF6000LCC**	1.6 gal. low consumption flush-water closet
ZAF6000WSC**	3.5 gal. water saving flush-water closet
ZAF6000FFC**	4.5 gal. full flush-water closet
ZAF6000LCU**	1.0 gal. low consumption flush-urinal
ZAF6000WSU**	1.5 gal. water saving flush-urinal
ZAF6000FFU**	3.0 gal. full flush-urinal

**\*\*AVAILABLE OPTIONS:**

Water Closets/Urinals:  
 SH - Side (Standard)  
 HF - Handle Front  
 B1 - Push Button, 1"  
 B3 - Push Button, 3"  
 VRC-Vandal Resistant  
 Stop Cover  
 CF - Cast Wall Flange  
 SS - Sweat Solder Kit

**AVAILABLE SIZES:**

Water Closets:  
 11.5" R.I.  
 16" R.I.  
 24" R.I.  
 27" R.I.  
Urinals:  
 3/4"  
 1-1/4"

**PARTS LIST:**

Part #	description
1. Z1000HNN	handle nut
2. Z1100HI	handle sleeve & insert
3. Z1206LS	low force/ADA compliant handle
4. Z1212TR	actuator rod
5. Z1515ORG	handle o-ring
6. Z2000HN	handle spring
7. Z2347HR	handle retainer
8. Z23721HL	handle seal
9. Z23812GK	gasket
10. Z3488VC	valve body cover
11. Z3577CV	plastic cover
12. Z237UVV	trip mechanism/relief valve-urinal
Z337CVV	trip mechanism/relief valve-closet
13. Z0224RD	retainer disc
14. Z0356DG	diaphragm
15. Z0478FR	flow ring
16. Z06219GUR	guide ring
17. Z0834CYS	cylinder slide
18. Z4765VV	valve body
19. Z4211VBW	vacuum breaker friction washer
20. Z5268VBI	vacuum breaker insert
21. Z5547VBB	vacuum breaker duck bill
22. Z5899VBT	vacuum breaker tube
23. Z5321VBN	vacuum breaker tube nut
24. Z6521SNT	spud nut
25. Z6868SPW	spud friction washer
26. Z6547SPV	spud sleeve
27. Z6212SPE	spud escutcheon
28. Z7733TP	tailpiece
29. Z7245SPR	snap ring
30. Z7868TORG	tailpiece o-ring
31. Z7990SLN	locking nut
32. Z7070FTS	setscrew for cast wall flange
33. Z8747SO	stop body
34. ZS8668PO	piston seal
35. Z8213PO	piston
36. Z8766SOS	stop spring
37. Z8999ORG	guide o-ring
38. Z9000GU	piston guide
39. Z9090GU	guide holder
40. Z9116SJ	adjusting screw
41. Z9282SPC	stop cap
42. Z9632SC	snap cap screw cover

**AVAILABLE KITS:**

Part #	description
<b>K1.</b> ZAF16DRK	1.6 gal. low consumption closet kit
ZAF35DRK	3.5 gal. water saving closet kit
ZAF45DRK	4.5 gal. full flush closet kit
ZAF10DRK	1.0 gal. low consumption urinal kit
ZAF15DRK	1.5 gal. water saving urinal kit
ZAF30DRK	3.0 gal. full flush urinal kit
<b>K2.</b> ZN234526SC	diaphragm with flow rings
<b>K3.</b> Z566TPK	tailpiece repair kit
<b>K4.</b> Z987STK	VP control stop repair kit - 1" & 3/4"
<b>K5.</b> ZA62TPK	adjustable tailpiece for stand. flush
<b>K6.</b> Z100HKS	handle repair kit (side)
Z200HKF	handle repair kit (front)
<b>K7.</b> ZS111HAA	handle assembly (side)
ZF222HAA	handle assembly (front)
<b>K8.</b> Z7554VB	vacuum breaker repair kit
<b>K9.</b> Z8866FTA	flush tube assembly (specify size & length)
<b>K10.</b> Z9292SCA	spud coupling assembly (specify size)

**Rebuild Kits Include Items 4-9, 12, 13, 15-17, 26:**

4.5g	#ZAF45CRK	3.0g	#ZAF30URK
3.5g	#ZAF35CRK	1.5g	#ZAF15URK
1.6g	#ZAF16CRK	1.0g	#ZAF10URK

**Toilet Seats**

**ROUND WOOD TOILET SEAT**

- Enameled Wood Composition
- Hardware Included



Part#	description	finish
170001	round wood	white
170004	round wood	bone

**ENLONGATED WOOD TOILET SEAT**

- Enameled Wood Composition
- Hardware Included



Part#	description	finish
170015	elong wood	white
170017	elong wood	bone

**ENLONGATED PLASTIC TOILET SEAT**

- Heavy Plastic Body
- Hardware Included



Part#	description	finish
170027	elong plastic	white
170029	elong plastic	bone

**ENLONGATED PLASTIC TOILET SEAT OPEN FRONT W/COVER**

- Heavy Duty Plastic Body
- Includes Corrosion Proof Nuts & Bolts



Part#	description	finish
170033	elong H/D plastic	white

**Toilet Seats**

**ENLONGATED PLASTIC TOILET SEAT OPEN FRONT W/COVER**

- Heavy Duty Commercial Grade Solid Plastic Body
- Includes Corrosion Proof Nuts & Bolts



Part#	description	finish
170045	elong comm. grade plastic	white

**ENLONGATED PLASTIC TOILET SEAT OPEN FRONT W/O COVER**

- Heavy Duty Solid Plastic Body
- Includes Corrosion Proof Nuts & Bolts



Part#	description	finish
170056	elong H/D plastic	white

**ENLONGATED PLASTIC TOILET SEAT OPEN FRONT W/O COVER**

- Heavy Duty Commercial Grade Solid Plastic Body
- Includes External Check Hinge w/Stainless Steel Post



Part#	description	finish
170069	elong comm. grade plastic	white

**ROUND PLASTIC TOILET SEAT OPEN FRONT W/O COVER**

- Heavy Duty Commercial Grade Solid Plastic Body
- Includes External Check Hinge w/Stainless Steel Post



Part#	description	finish
170072	round comm. grade plastic	white



**Toilet Installation & Repair Parts**

**TOILET SEAT HINGE SET**

- Durable White Plastic
- Includes: Corrosion Proof Nuts & Bolts



Part#	description	finish
170085	seat hinge set	white

**TOILET SEAT BOLTS**

- Durable White Plastic
- Includes Nuts



Part#	description	finish
170099	2-1/2" long	white

**TOILET SEAT BUMPER SET**

- Includes White Rubber Rectangular & Round Bumpers With Chrome Plated Screws



Part#	description	finish
170103	bumper set	white

**TOILET BOWL BOLT CAP**

- White Plastic



Part#	description	finish
170115	round w/washer	white
170117	round w/o washer	white
170119	oval w/o washer	white

**REPLACEMENT TANK COVER**

- Universal Adjustment



Part#	description	finish
170122	21-3/16" x 7-7/8"	white

**Toilet Installation & Repair Parts**

**TOILET WASHER**



Part#	description
170133	flexible plastic captive
170136	round washer-zinc

**WAX RING - 4"**

- For Setting Most Floor Mounted Toilets



Part#	description
170147	ring only

**WAX RING WITH FLANGE**

- For Setting Most Floor Mounted Toilets



Part#	description
170158	4" x 3"

**WAX RING WITH FLANGE**

- For Setting Most Floor Mounted Toilets
- With 1/4" x 2-1/4" Bolt Set



Part#	description
170167	4" x 3" w/brass bolts

**WAX RING SET**

- For Setting Most Floor Mounted Toilets
- With 4" Wax Ring, Two Pair Nuts & Washers & 1/4" x 2-1/4" Bolt Set



Part#	description
170176	wax ring w/bolts

**SPONGE RUBBER TOILET BOWL GASKET**

- For Setting Most Floor Mounted Toilets



Part#	description
170182	5-1/4" x 3/4" thick

**Toilet Installation & Repair Parts**

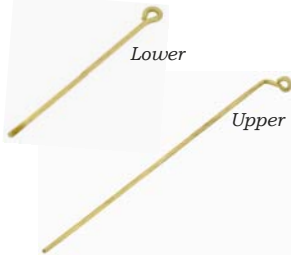
**TOILET TANK BALL**



Part#	description
170300	with glide seat tip
170303	without tip

**LIFT WIRE**

- Solid Brass Rod



Part#	description
170311	5" - lower
170315	9" - upper

**FLUSH VALVE**

- Includes Locknut & Washer



Part#	description
170322	non-metallic valve w/flapper & chain

**FLUSH VALVE**

- Includes Locknut & Washer
- Brass Body



Part#	description
170339	brass valve & overflow tube

**FLUSH VALVE WASHER**

- Molded Rubber

- *For American Standard*

Part#	size
170341	3-1/8"OD x 2-3/8"ID x 1/2"



- *Universal*

Part#	size
170342	3-1/16"OD x 2-1/4"ID x 3/8"



**Toilet Installation & Repair Parts**

**BRASS CLOSET SPUD**

- Complete With Brass Locknut, Rubber & Metal Washers
- Cast Brass Body



Part#	size
170350	1" x 3/4"
170351	1-1/4"
170353	1-1/2"
170355	1-1/2" x 1-1/4"
170356	2"
170357	2" x 1-1/4"
170359	2" x 1-1/2"

**RUBBER SPUD WASHER**

- Fits Brass Closet Spuds



Part#	size
170360	1"
170362	1-1/4"
170364	1-1/2"
170366	2"
170368	2" x 1-1/4"

**TANK TO BOWL GASKET SPONGE RUBBER**

- Beveled Sponge Rubber



Part#	description	size
170370	universal type	3-3/8" OD x 3/4"
170373	for Gerber	3-1/4" OD x 1-1/4"
170375	for Amer.Stand., Kohler, Western Pottery & Briggs	3-1/4" OD x 2-1/8" ID x 1-1/16"

**TANK TO BOWL GASKET MOLDED RUBBER**

- Recessed Molded Rubber

Part#	description	size
170386	for Kohler & American Standard	4-1/4" OD x 3/4"



Part#	description	size
170388	for Eljer	3-1/8" OD x 1/2"



**Toilet Installation & Repair Parts**

**PVC BLUE FLAPPER  
PRO SERIES**

- Fit All Style
- PVC With Reinforced Fiber



**Part#** 170401  
**description** blue PVC flapper

**KORKY BLACK FLAPPER**

- Molded Durable Rubber



**Part#** 170414  
**description** korky black flapper

**KORKY PRO RED FLAPPER**

- Premium Quality Chlorazone
- Material To Withstand Chloramine & Cleaners
- Universal Replacement



**Part#** 170420  
**description** korky red flapper

**TOILET TANK FLAPPER**

- For Kohler



**Part#** 170433  
**description** Kohler flapper

**Toilet Installation & Repair Parts**

**TOILET TANK FLAPPER  
ECONOMY**

- Universal - Fit All Style



**Part#** 170444  
**description** removable trundle

**TOILET TANK FLAPPER  
ECONOMY**

- Fit All Style



**Part#** 170457  
**description** cut off type trundle

**TOILET TANK FLAPPER**

- Universal - Fit All Style
- Blue Rubber Resists Hard Water



**Part#** 170469  
**description** removable trundle

**PVC BLUE FLAPPER**

- Fit All Style
- PVC With Reinforced Fiber Flapper & Strap



**Part#** 170472  
**description** blue PVC flapper

**Toilet Installation & Repair Parts**

**ADJUSTABLE ANTI-SIPHON FILL VALVE**



- Adjustable From 8" To 13"
- Easy No-tool Installation

**Part#** 170505 **description** adjustable fill valve

**ADJUSTABLE FILL VALVE REPLACEMENT SEAL CAP ASSEMBLY**



**Part#** 170511 **description** rep.seal cap assm.

**BRASS FLOAT ROD**

- 1/4 - 20 Thread Both Ends



**Part#** 170523 **description** 8"  
170527 10"

**BALLCOCK REFILL TUBE**

- Plastic With Stainless Steel Tip



**Part#** 170536 **description** ballcock refill tube

**FLOAT BALL**

- High Buoyancy
- Non-corrosive Plastic



**Part#** 170544 **description** 4" x 6"

**Toilet Installation & Repair Parts**

**ADJUSTABLE BALLCOCK PRO SERIES**



- Adjustable From 9" To 13"
- Anti-siphon
- Brass Float Rod
- Chlorine Resistant Body
- Easy No-tool Installation

**Part#** 170555 **description** adjustable ball cock

**BALLCOCK**

- Water Level Adjustment Screw
- Includes Refill Tube, 5/8" or 1/2" Coupling Nut, Flange Nut, Shank Washer & Float Rod



**Part#** 170562 **description** 8"-1 1/2"  
170566 10" anti-siphon plastic

**BALLCOCK BEVELED SHANK WASHER**

- Rubber



**Part#** 170579 **description** ballcock shank washer

**BALLCOCK NUT**

- 7/8" Thread



**Part#** 170582 **description** plastic ballcock nut

**BALLCOCK COUPLING NUT**

- 7/8" Supply Line Nut



**Part#** 170596 **description** ballcock coupling nut

**Toilet Installation & Repair Parts**

**TILT VALVE ACTUATING UNIT**

- For American Standard



**Part#** 170603  
**description** new style low unit

**TILT VALVE SEAT DISC**

- For American Standard



**Part#** 170612  
**description** screw-on  
170615 snap-on

**TOUCH FLUSH VALVE**

- For Eljer
- Rubber Float
- Includes Chrome Plated Flush Handle



**Part#** 170628  
**description** flush valve unit

**BALLCOCK TOP**

- Includes 3 Screws



**Part#** 170636  
**description** ballcock top

**BALLCOCK SEAL**

- For Fluidmaster #100 & #200 Ballcocks



**Part#** 170647  
**description** ballcock seal

**Toilet Installation & Repair Parts**

**BALLCOCK REPAIR KIT**

- For Hoover/Amerline



**Part#** 170650  
**description** repair kit w/4 screws

**BALLCOCK REPAIR KIT**

- For Mansfield #07 Ballcock



**Part#** 170655  
**description** 07 repair kit w/4 screws

**SLOAN GEM 2 FLUSH VALVE CONTROL STOP REPAIR KIT**

- For Sloan/Zurn



**Part#** 170905  
**description** 1" control stop

**SLOAN REGAL FLUSH VALVE CLOSET/URINAL MASTER REBUILD KIT**

- For Sloan/Zurn
- Includes V/B Kit, Handle Kit, Inside Repair Kit & O-ring



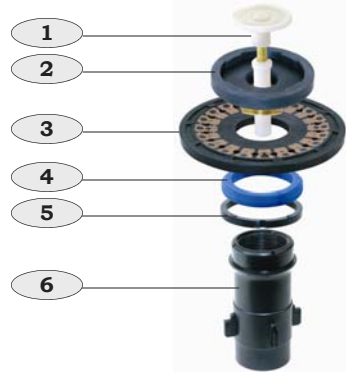
**Part#** 170911 4.5 GPM-closet  
170915 3.5 GPM-closet  
170917 1.6 GPM-closet

170912 1.5 GPM-urinal  
170914 1.0 GPM-urinal



**Toilet Installation & Repair Parts**

**SLOAN REGAL  
FLUSH VALVE  
REPAIR PARTS**



<b>Part#</b>	<b>description</b>
170920	diaphragm repair kit (3)
170921	4.5 GPM closet repair kit (1-6)
170923	3.5 GPM closet repair kit (1-6)
170925	1.6 GPM closet repair kit (1-6)
170924	1.5 GPM urinal repair kit (1-6)
170926	1.0 GPM urinal repair kit (1-6)
170929	disc (2)

**SLOAN CROWN FLUSH VALVE  
HANDLE REPAIR KIT**

- For Closets & Urinals



<b>Part#</b>	<b>description</b>
170955	handle repair kit

**SLOAN CROWN FLUSH VALVE  
VACUUM BREAKER REPAIR KIT**

- For Closets & Urinals



<b>Part#</b>	<b>description</b>
170966	vacuum breaker repair kit



**Closet Bolts**

**CLOSET BOLT SET  
SOLID BRASS**

- 2 Each: Bolts, Nickel Plated Open End Nuts and Washers
- Plastic Captive Washers



Part#	description
170202	1/4" x 2-1/4" brass bolt
170204	1/4" x 3-1/2" brass bolt
170206	5/16" x 2-1/4" brass bolt
170208	5/16" x 3-1/2" brass bolt

**CLOSET BOLT SET  
SOLID BRASS**

- 2 Bolts & 4 Each: Nickel Plated Open End Nuts and Washers
- Plastic Captive Washers



Part#	description
170211	1/4" x 2-1/4" brass bolt

**CLOSET BOLT SET  
SOLID BRASS**

- 2 Each: Bolts, Nickel Plated Open End Nuts and Washers
- Plastic Captive Washers



Part#	description
170222	1/4" x 2-1/4" brass break off bolt

**CLOSET BOLT SET  
BRASS PLATED**

- 2 Each: Bolts, Nickel Plated Open End Nuts and Washers
- Plastic Captive Washers



Part#	description
170233	1/4" x 2-1/4" brass plated bolt
170235	1/4" x 3-1/2" brass plated bolt
170237	5/16" x 2-1/4" brass plated bolt
170239	5/16" x 3-1/2" brass plated bolt

**CLOSET BOLT SET  
BRASS PLATED**

- 2 Bolts & 4 Each: Nickel Plated Open End Nuts and Washers
- Plastic Captive Washers



Part#	description
170245	1/4" x 2-1/4" brass plated bolt

**Closet Bolts**

**CLOSET SCREW SET  
SOLID BRASS**

- 2 Screws & 2 Each: Nickel Plated Closed End Steel Nuts and Round Washers



Part#	description
170256	1/4" x 2-1/2" brass screw

**CLOSET SCREW SET  
BRASS PLATED**

- 2 Screws & 2 Each: Nickel Plated Closed End Steel Nuts and Round Washers



Part#	description
170262	1/4" x 2-1/2" brass plated
170263	1/4" x 3-1/2" brass plated

**TOILET TANK TO BOWL BOLT SET**

- Includes All Nuts & Washers For Pair
- Round Or Flat Head Bolts Available



*Round Head*

Part#	description
170275	5/16" x 3" brass plated
170276	5/16" x 3" brass



*Flat Head*

Part#	description
170277	5/16 x 3" brass

**TOILET TANK TO BOWL BOLT SET**

- Includes All Nuts & Washers For Pair
- With Sponge Rubber Tank To Bowl Gasket



Part#	description
170282	5/16" x 3" round brass bolts
170287	5/16" x 3" round brass plated bolts



**ADJUSTABLE TANK TO BOWL BOLT SET**

- Includes All Nuts & Washers For Pair
- Used To Accommodate Offset Bolt Hole Patterns



Part#	description
170299	brass

**Toilet Tank Levers**

**8-1/2" BRASS PLATED ARM**

- Universal Fit With Die Cast Handle & Nut



Part#	handle	nut	finish
170701	metal	plastic	CR
170703	metal	metal	CR
170705	metal	plastic	BN
170707	metal	metal	PB

**8-1/2" BRASS ARM**

- Heavy Duty Universal Fit With Die Cast Handle & Nut
- Solid Brass Arm



Part#	handle	nut	finish
170716	metal	metal	CR
170718	metal	metal	PB

**8-1/2" BRASS ARM**

- Universal Fit With Die Cast Handle & Nut
- Heavy Duty - Made In U.S.A.



Part#	handle	nut	finish
170726	metal	metal	CR

**8-1/2" BRASS ARM**

- Universal Fit With Brass Arm



Part#	handle	nut	finish
170734	metal	metal	CR

**Toilet Tank Levers**

**8-1/2" PLASTIC ARM**

- Universal Fit With White Plastic Arm



Part#	handle	nut	finish
170745	plastic	plastic	CR
170747	plastic	plastic	WHT

**8-1/2" PLASTIC ARM**

- For Kohler



Part#	handle	nut	finish
170759	plastic	plastic	CR

**9-1/8" PLASTIC ARM**

- For Mansfield
- Blue Bendable Arm



Part#	handle	nut	finish
170768	plastic	plastic	CR

**10-1/4" BRASS ARM**

- For Mansfield



Part#	handle	nut	finish
170777	metal	plastic	CR

**4-1/2" SIDE MOUNT SOLID BRASS ARM**

- Heavy Duty
- For Kohler Rialto



Part#	handle	nut	finish
170784	brass	metal	CR
170788	brass	metal	PB

**Toilet Tank Levers**

**8-1/2" SOLID BRASS ARM**

- Heavy Duty
- For Kohler



Part#	handle	nut	finish
170802	brass	metal	CR

**8-1/2" SOLID BRASS ARM**

- Heavy Duty Arm With External Adjustment
- For Kohler



Part#	handle	nut	finish
170813	brass	brass	CR
170817	brass	brass	PB

**4-1/4" PLASTIC ARM**

- For American Standard, Eljer & Briggs



Part#	handle	nut	finish
170820	plastic	plastic	CR

**5-1/2" BRASS ARM**

- For American Standard, Eljer & Briggs



Part#	handle	nut	finish
170834	metal	metal	CR

**Toilet Tank Levers**

**4-1/2" PLASTIC ARM**

- For Eljer



Part#	handle	nut	finish
170848	plastic	plastic	CR

**9-1/4" SIDE MOUNT BRASS ARM**

- For Eljer



Part#	handle	nut	finish
170859	metal	plastic	CR

**4-1/8" BRASS ARM**

- For American Standard



Part#	handle	nut	finish
170866	plastic	plastic	CR

**6-1/8" BRASS ARM**

- For American Standard



Part#	handle	nut	finish
170874	plastic	plastic	CR