

# PLUMBING SPECIALTIES

- ROOF FLASHING
- PIPE SLEEVING
- SHOWER PAN LINERS
- TEST GAUGES
- BATHROOM ACCESSORIES-SPECIALTY
- STOPPERS

**Roof Flashing**

**GALVANIZED STEEL BASE**



Part#	description
140001	1-1/4" or 1-1/2"
140003	2"
140005	3"
140007	4"

**Roof Flashing**

**ALUMINUM BASE**



Part#	description
140041	1-1/4" or 1-1/2"
140043	2"
140045	3"
140047	4"

**3-IN-1 GALVANIZED STEEL BASE**



Part#	description
140011	1-1/4", 1-1/2", 2" or 3"

**MULTI-SIZE ALUMINUM BASE**



Part#	description
140054	1-1/4" to 3"
140058	3" to 4"

**FLEXIBLE PLASTIC BASE**



Part#	description
140022	1-1/4" or 1-1/2"
140024	2"
140026	3"
140028	4"

**Pipe Sleeving**

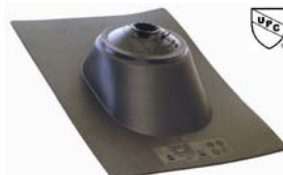
**PIPE SLEEVING**

- Used on 1/2", 3/4" or 1" Copper, PEX, Poly or CPVC Tube



Part#	size	description
140111	6 mil x 200'	blue
140113	6 mil x 200'	red

**MULT-SIZE HARD PLASTIC BASE**



Part#	description
140036	1-1/4" to 1-1/2", 2" or 3"
140039	3" or 4"

**PIPE SLEEVING**

- Used on 1/2" - 3/4" Tube



Part#	size	description
140114	32 mil x 100'	red
140118	32 mil x 100'	blue

**Shower Pan Liners**

**SHOWER PAN LINER**

- PVC
- SBCCI BUCA Approved



Part#	size	description
140122	40 mil.- 4' x 50'	orange
140124	40 mil.- 5' x 40'	orange
140126	40 mil.- 6' x 50'	orange

**SHOWER PAN SOLVENT**

- PVC
- SBCCI BUCA Approved



Part#	size
140130	pint

**Test Gauges**

**GAS PRESSURE TEST GAUGE**

- 3/4" IPS Connection
- Shatter Resistant Lens
- Steel Case



Part#	face	description
140205	2"	0 to 30 PSI

**WATER PRESSURE TEST GAUGE**

- 3/4" Brass Hose Connection
- Shatter Resistant Lens
- Steel Case



Part#	face	description
140217	2-1/2"	0 to 300 PSI

**PRESSURE TEST GAUGE**

- 1/4" NPT Brass Lower Connection
- Shatter Resistant Lens
- Steel Case



Part#	face	description
140220	2"	15 PSI
140222	2"	30 PSI
140224	2"	60 PSI
140226	2"	100 PSI
140228	2"	160 PSI

**LOW PRESSURE TEST KIT**

- Low Pressure Gas Gauge With 3' Rubber Push On Hose
- Calibrated At 0-20 oz/in.<sup>2</sup> And 0-30 in. H<sub>2</sub>O
- Eliminates The Need For A Manometer



Part#	face
140239	low pressure gas gauge

**Bathroom Accessories - Specialty**

**Stoppers**

**LAVATORY LEGS**

- 28" Chrome - Adjustable
- For Wall Mount Basins



Part#	description	finish
191010	adjustable - per pair	chrome

**LAVATORY SINK HANGER**

- V-Type
- Steel



Part#	description	finish
191022	steel	N/A

**TRAP AIR VENT WITH TAILPIECE**

- 1-1/2"



Part#	description	finish
140169	trap air vent	N/A

**ACCESS PANEL**

- Provides Access To Plumbing Behind Walls Or In Ceilings
- Plastic



Part#	dimensions	opening
140177	11" x 11" x 3/4"	8" x 8"
140175	8" x 11" x 3/4"	6" x 9"
140179	17" x 17" x 3/4"	14" x 14"

**CLEANOUT COVER PLATE**

- Stainless Steel
- Counter Sink Hole For Either 1/4" or 5/16" Screws
- Screw Included



Part#	description	finish
140181	3" diameter	SS
140183	4" diameter	SS
140185	5" diameter	SS
140187	6" diameter	SS

**DRAIN STOPPER**

- Rubber



Part#	description	color
130259	5" flat	white

**FIT-ALL STOPPER**

- Rubber



Part#	description	color
130269	fits 1" thru 1-3/8"	white
130269BC	fits 1" thru 1-3/8" w/11" beaded chain	white

**FIT-ALL STOPPER**

- Rubber



Part#	description	color
130270	fits 1-1/2" thru 2"	white
130270BC	fits 1-1/2" thru 2" w/15" beaded chain	white

**HAIR SNARE**

- PVC



Part#	description	color
140199	hair snare	white