

Roof Flashing

GALVANIZED STEEL BASE



Part#	description
140001	1-1/4" or 1-1/2"
140003	2"
140005	3"
140007	4"

Roof Flashing

ALUMINUM BASE



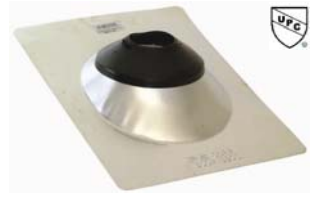
Part#	description
140041	1-1/4" or 1-1/2"
140043	2"
140045	3"
140047	4"

3-IN-1 GALVANIZED STEEL BASE



Part#	description
140011	1-1/4", 1-1/2", 2" or 3"

MULTI-SIZE ALUMINUM BASE



Part#	description
140054	1-1/4" to 3"
140058	3" to 4"

FLEXIBLE PLASTIC BASE



Part#	description
140022	1-1/4" or 1-1/2"
140024	2"
140026	3"
140028	4"

Pipe Sleeving

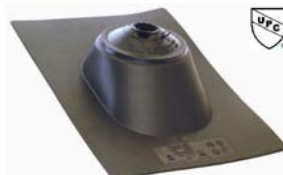
PIPE SLEEVING

- Used on 1/2", 3/4" or 1" Copper, PEX, Poly or CPVC Tube



Part#	size	description
140111	6 mil x 200'	blue
140113	6 mil x 200'	red

MULT-SIZE HARD PLASTIC BASE



Part#	description
140036	1-1/4" to 1-1/2", 2" or 3"
140039	3" or 4"

PIPE SLEEVING

- Used on 1/2" - 3/4" Tube



Part#	size	description
140114	32 mil x 100'	red
140118	32 mil x 100'	blue